

## Ponderosa Escapade 110 mile Support Crew Information:

Checkpoint: The Trailshead Lodge Checkpoint is the only place on the course where you will be allowed to meet your rider and not get a DNF. You may supply them with food, water, and mechanical help. There is very limited cell reception on course, but this establishment has a landline where riders may call you if needed. This checkpoint also has a cut-off time of 2pm that we ask riders to honor. We will have a sag person out on course that "may" be able to get riders to Trailshead Lodge should they break down or get hurt. We are also providing several Bail Out points on course, where riders will have cell reception and may be able to call you to come and get them. Anyone meeting their support crew at a bailout point is considered a DNF!

Below are the directions to each bail-out location on course and to the Trailshead Lodge Checkpoint.

Bail Point #1: Leaving Spearfish (Exit 10) Merge onto I-90 W/US-14 W via the ramp on your left, heading toward Sundance, WY. In about 11 miles take Exit 205. Gas station is right off the exit. Bail Point

#2: Leaving Spearfish (Exit 10) Merge onto I-90 W/US-14 via the ramp on your left, heading toward Sundance, WY. In about 25 miles take exit 191 and turn left onto Moskee Rd. Stay on Moskee Rd for about 8 miles and Reynolds Rd. will be on your right. Stop here to pick up your rider.

#3 Trails Head Lodge Checkpoint or Bail Point: Leaving Spearfish head out of town on I90 East. Go 5.6 miles and take exit 17 to Highway 85 South. Stay on Highway 85 for approx. 33.5 miles, through Deadwood and Lead all the way to Trailshead Lodge. Bail Point

#4: Leaving Spearfish take Spearfish Canyon US HWY 14 A for 13 miles to Savoy. Take a right onto Roughlock Rd for 6 miles, a Left on Tinton Rd, and a Right onto Wagon Canyon Rd. Stay right on 804 at intersection to Cement Ridge. Meet Rider at the bottom of the Cement Ridge Climb. \*\*If you use this bailout, you will be on course so please drive slowly and carefully and only use this bailout if absolutely necessary.

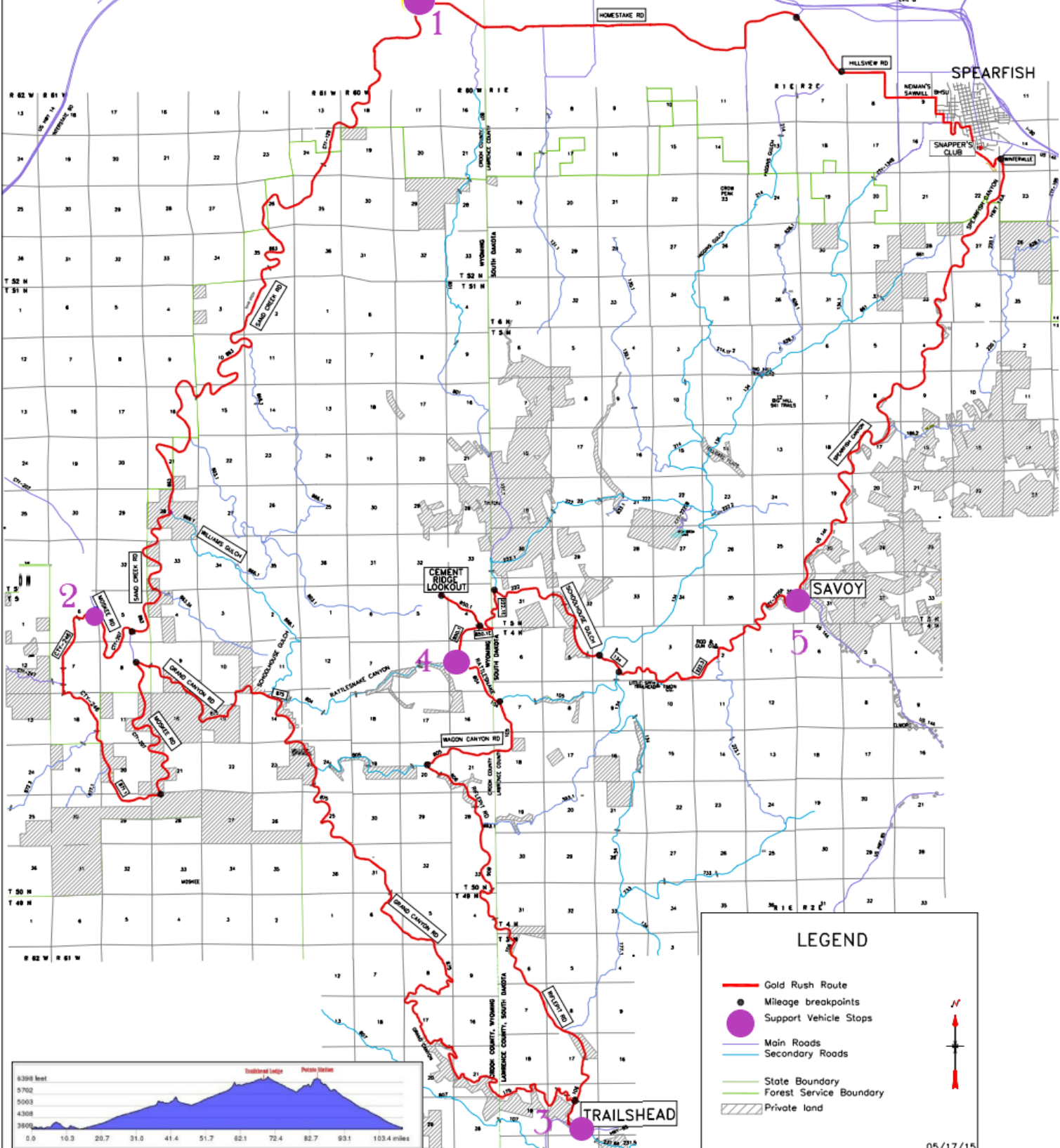
Bail Point #5: Leaving Spearfish take Spearfish Canyon US HWY 14 A for 13 miles to Savoy.

If a rider Bails Out please inform the chip timers at the start/finish area that they are a DNF, or text 605-641-4967 with the Riders Race # followed by DNF. All riders need to be accounted for at the end of the day! If a rider fails to finish and doesn't check in to let us know, we will call your emergency contact at the end of the day! We don't want to scare anyone's mother or spouse, so please, please check in if you fail to finish the race

Seep Map Below



# 110 mile Support Crew Map



**LEGEND**

- Gold Rush Route
- Mileage breakpoints
- Support Vehicle Stops
- Main Roads
- Secondary Roads
- State Boundary
- Forest Service Boundary
- ▨ Private land

N ↑